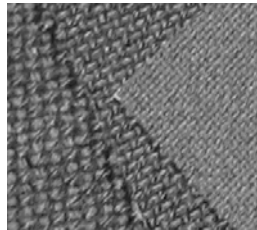
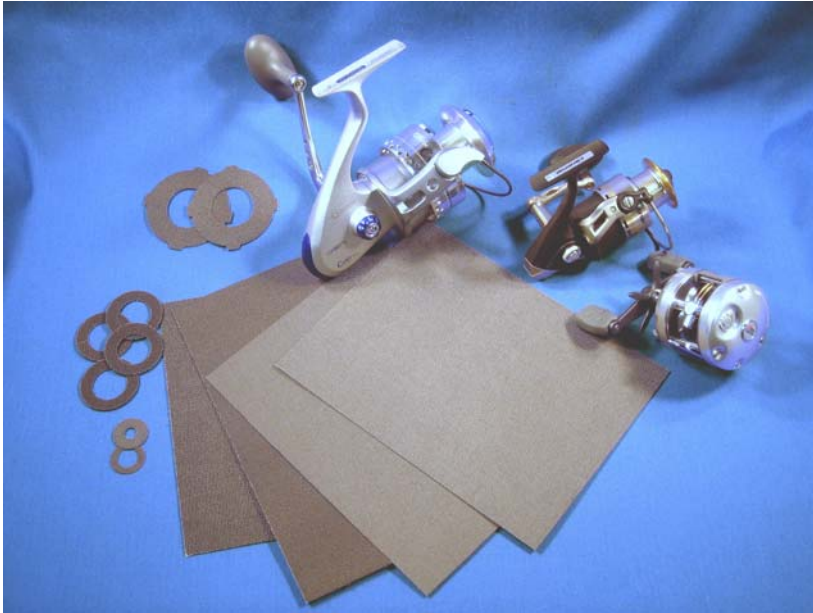


AvCarb® Carbon Fiber Products Carbon Drag Washer Material



BALLARD®
power to change the world®



Carbon Fiber Performance for Every Reel

At one time, carbon fiber materials were used only for military, aircraft, and high performance automobile applications. Today this versatile, high performance material from BMP has enhanced the performance of drag mechanisms of leading fishing reel producers and is stopping fish in their tracks worldwide.

BMP is a carbon fiber innovator and has supplied carbon fiber for critical friction applications for over 30 years, such as automotive torque converter clutches. For the past 20 years, we have supplied leading fishing reel manufacturers with the best drag materials available, made from highly engineered carbon fiber fabric.

Originally used only in big game sports fishing reels, fishing reel manufacturers can now offer carbon fiber performance in a wide range of fishing reels. BMP has broadened its carbon fiber drag material portfolio to meet a wide variety of price / performance needs. Contact us today to discuss your drag system requirements.

AvCarb® Drag Benefits

- Stable drag for controlled line payout at strike and throughout long fights
- Unequalled smoothness of feel over a wide range of conditions
- Rapid heat dissipation and thermal stability
- High durability

Suggested Uses

- Drag Washers for ALL fishing reels
 - Fly, Trolling, Spinning, Casting
- May be used with or without lubricants

Design Options

- Glass or Resin Structural Support
- Double or Single Sided Friction Surfaces
- Thickness Range 0.5 mm – 1.5 mm
- Fine or Coarse Fabric Weave Patterns

Availability

- Standard size is 15"x 20" panels
- Available as washers pre-cut to customer specifications
- Samples available upon request

Specifications and descriptions in this document were in effect at the time of publication. Ballard Material Products Inc. reserves the right to change specifications or to discontinue products at any time. AvCarb® is a registered trademark, AccuCarb™ is a trademark of Ballard Material Products Inc.

AvCarb® Carbon Fiber Products
Carbon Drag Washer Material



FIBERGLASS REINFORCED PRODUCTS

AvCarb® code	THICKNESS		FRICTION SURFACE	FABRIC WEAVE
	mil	mm		
DSL23F	23	0.6	2	fine
DSL40F	40	1.0	2	fine
DSL60C	60	1.5	2	coarse

RESIN SATURATED PRODUCTS

AvCarb® code	THICKNESS		FRICTION SURFACE	FABRIC WEAVE
	mil	mm		
DSS20F	20	0.5	2	fine
DSS20C	20	0.5	2	coarse
DSS30CF	30	0.8	2	coarse/fine
DSS40C	40	1.0	2	coarse
DSS50C	50	1.3	2	course

Nomenclature Description

- DS - double sided drag, SS - single sided drag
- S - resin saturated, L - glass laminate
- thickness in mils
- F - fine weave fabric, C - coarse weave fabric



Specifications and descriptions in this document were in effect at the time of publication. Ballard Material Products Inc. reserves the right to change specifications or to discontinue products at any time. AvCarb® is a registered trademark and AccuCarb™ is a trademark of Ballard Material Products Inc.