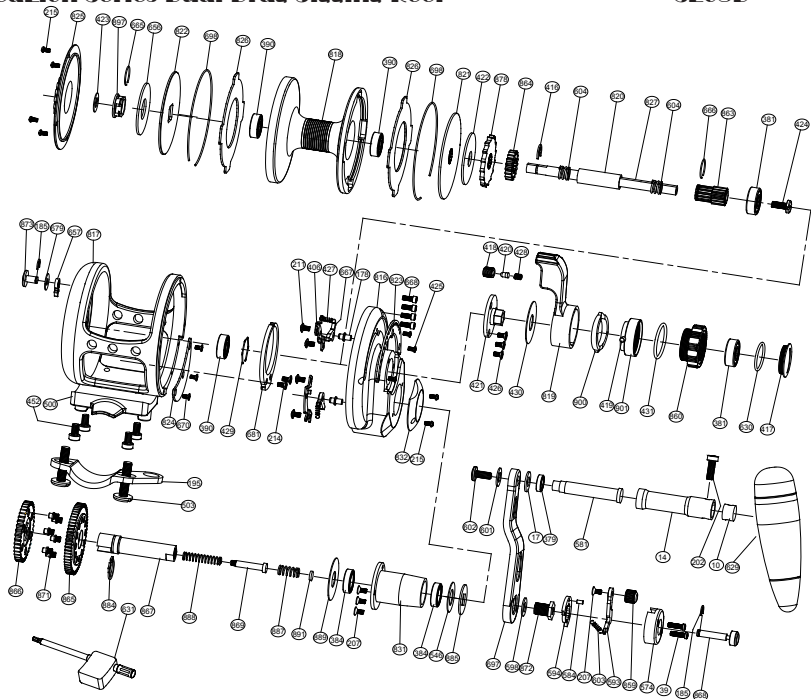


SeaLion Series Dual Drag Jigging Reel

SLOSD



No.	PARTS NAME	No.	PARTS NAME	No.	PARTS NAME
10	Handle shaft retainer	503	Fixed screws	821	Front drag plate
14	Handle shaft coat	500	Reel foot	822	Rear drag plate
17	Washer 2	546	Drive shaft washer	823	Embedded clip
39	Button screw	452	Reel foot screws	824	Close cover
178	Set plate nail	574	Button basement	825	Cover
185	"E" washer	581	T handle nail	826	Drag plate
195	Rod clamp	584	Push nail	827	Spool shaft
202	Handle knob screw 1	593	Push slice	831	Drive shaft coat
207	Push slice screw	594	Stopping slice	832	Drive shield
211	Set plate screws	598	Handle bolt washer	859	Button lever knob
214	Alert ratchet screws	601	Washer 3	860	Drag tension knob
215	Cover screw	602	Handle knob screw 2	863	High speed pinion gear
379	Ball bearing (S117)	603	Push spring	864	Low speed pinion gear
381	Ball bearing (S606)	604	Spool shaft spring	865	Drive gear-high speed
384	Ball bearing (S6700)	629	Handle knob	866	Drive gear-low speed
390	Ball bearing (S696)	630	"O" ring	867	Drive shaft
406	Set plate	631	Wrench	868	Push button shaft
416	"E" washer	656	Spool spring washer	869	Slide pole
417	Drag knob cover	657	Alarm sound gear	871	Variable-speed pin
418	Sound coat	665	Big ring	872	Handle bolt
419	Pre-program key pin	666	Small ring	873	Strike alert lever
420	Sound nail	667	Anti-reverse dog	878	Anti-reverse ratchet
421	Bearing cover	668	Side plate screws	884	"C" washer
422	Spool spring washer	670	Close cover screws	885	Handle washer
423	Drag plate washer	679	Washer 1	887	Drive shaft spring
424	Spool shaft screw	681	Alert ratchet	888	Shaft insert spring
425	Screw embedded clip	697	Handle arm	889	Drive shaft coat washer
426	Screw for bearing cover	698	Spool ring	891	Variable-speed washer
427	Stopping slock spring	816	Right plate	897	Drag plate undersleeve
428	Sound nail spring	817	Frame	900	Pre-program plate
429	Bearing ring	818	Spool	901	Pre-program key
430	Drag control lever washer	819	Drag control lever		
431	"O" ring	820	Spool cannulation		